



GigaCrete Housing

WHY GIGACRETE

- Everyone deserves healthy housing
- No wood, Portland cement, drywall
- Zero VOC's or off-gassing
- High R-Values and energy efficient
- High abuse resistance
- Fire resistant
- Insect resistant
- Mold and mildew resistant
- Faster speed to build
- Waterproof

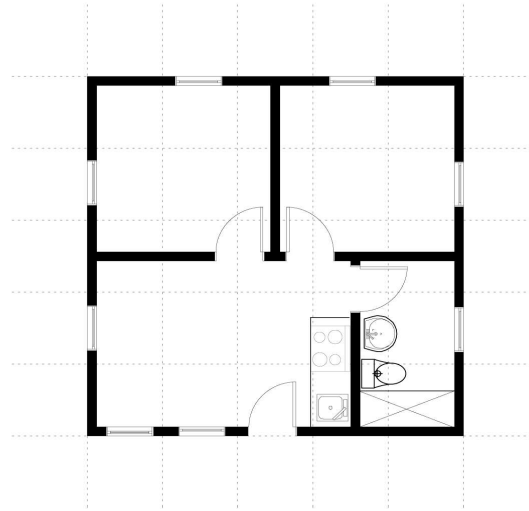


20 FT. / 6.1 M



6775 SPEEDWAY BLVD. M105
LAS VEGAS, NV 89115
PHONE: 702-643-6363 FAX: 702-543-7010

20 FT. / 6.1 M

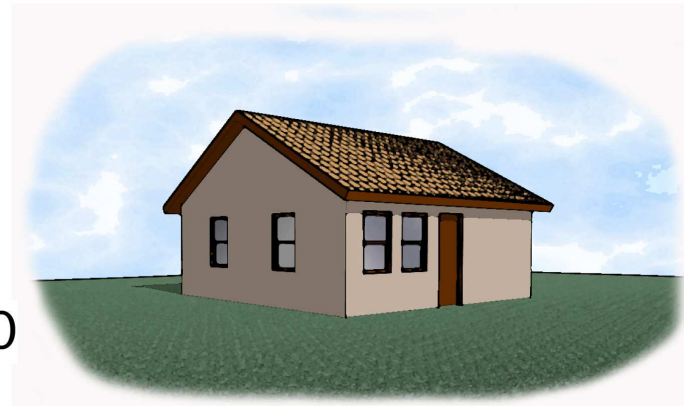


2 bed 1 bath

TWO BEDROOM - ONE BATH

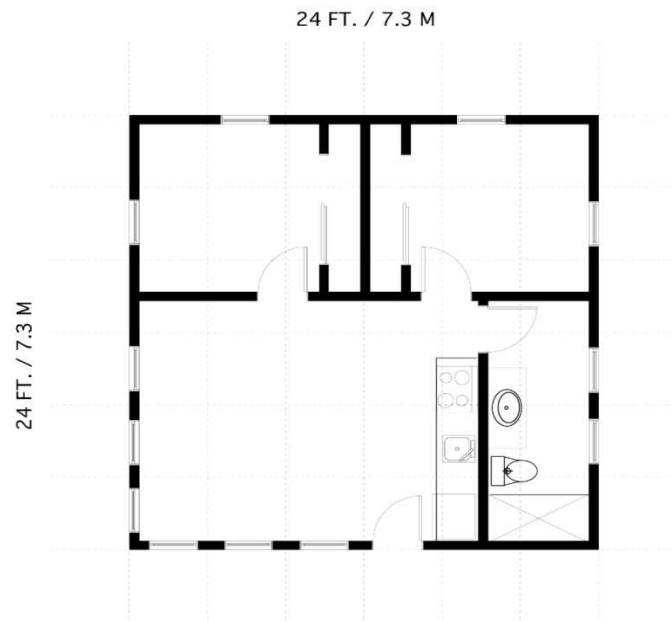
400 SQ. FT.
37.16 SQ. M

HOUSE 400





6775 SPEEDWAY BLVD. M105
LAS VEGAS, NV 89115
PHONE: 702-643-6363 FAX: 702-543-7010



2 bed 1 bath

TWO BEDROOM - ONE BATH

576 SQ. FT.
53.5 SQ. M



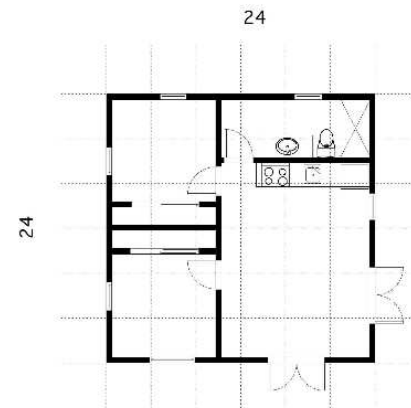
HOUSE 576

HOUSE 576-M

SCALE: 1/8" = 1'-0"



6775 SPEEDWAY BLVD. M105
LAS VEGAS, NV 89115
PHONE: 702-643-6363 FAX: 702-543-7010



2 bed 1 bath

FLOOR PLAN

576 TOTAL SQ. FT LIVING

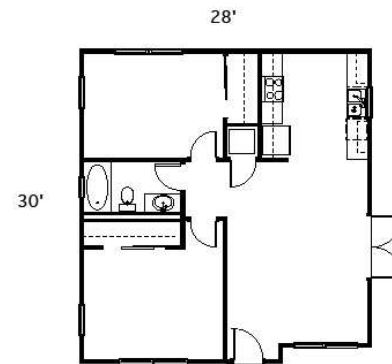


HOUSE 835

SCALE: 1/8" = 1'-0"



6775 SPEEDWAY BLVD. M105
LAS VEGAS, NV 89115
PHONE: 702-643-6363 FAX: 702-543-7010



2 bed 1 bath

FLOOR PLAN

835 TOTAL SQ. FT LIVING

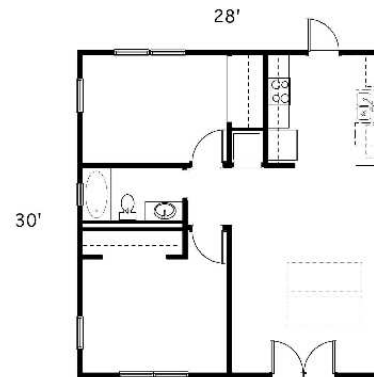


HOUSE 840-M

SCALE: 1/8" = 1'-0"



6775 SPEEDWAY BLVD. M105
LAS VEGAS, NV 89115
PHONE: 702-643-6363 FAX: 702-543-7010



2 bed 1 bath

FLOOR PLAN

840 TOTAL SQ. FT LIVING

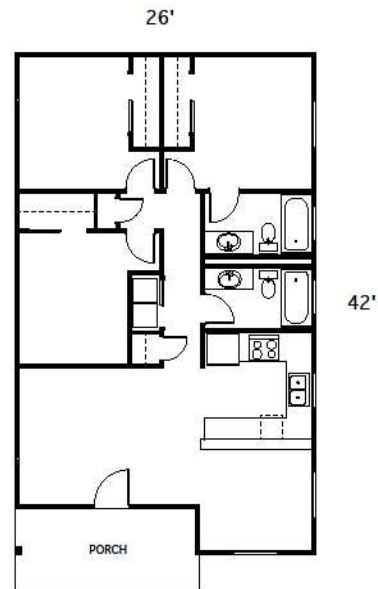


HOUSE 1045

SCALE: 1/8" = 1'-0"



6775 SPEEDWAY BLVD. M105
LAS VEGAS, NV 89115
PHONE: 702-643-6363 FAX: 702-543-7010



3 bed 2 bath

FLOOR PLAN

1,045 TOTAL SQ. FT LIVING



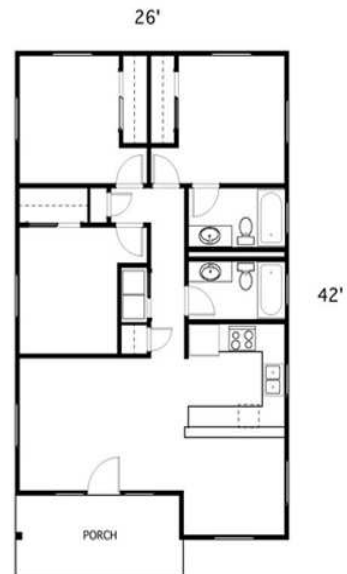
NOTE: SHOWN WITH OPTIONAL RAISED FOUNDATION
(SLAB FOUNDATION STANDARD)

HOUSE 1045a

SCALE: 1/8" = 1'-0"



6775 SPEEDWAY BLVD. M105
LAS VEGAS, NV 89115
PHONE: 702-643-6363 FAX: 702-543-7010



3 bed 2 bath

FLOOR PLAN

1,045 TOTAL SQ. FT LIVING

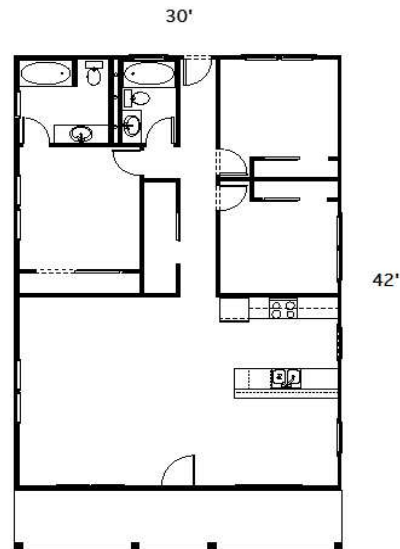


HOUSE 1260

SCALE: 1/8" = 1'-0"



6775 SPEEDWAY BLVD. M105
LAS VEGAS, NV 89115
PHONE: 702-643-6363 FAX: 702-543-7010



42'

3 bed 2 bath

FLOOR PLAN

1,260 TOTAL SQ. FT LIVING



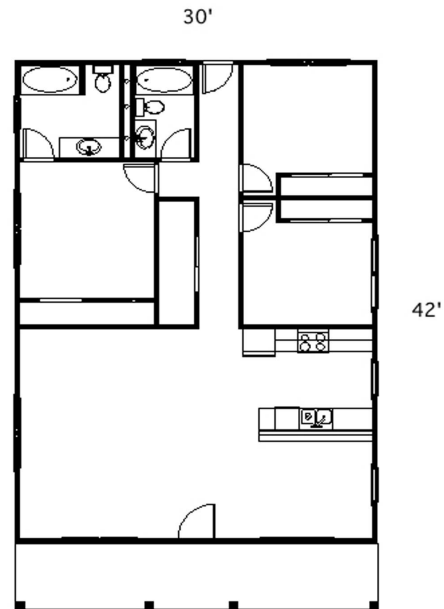
NOTE: SHOWN WITH OPTIONAL RAISED FOUNDATION
(SLAB FOUNDATION STANDARD)

HOUSE 1260a

SCALE: 1/8" = 1'-0"



6775 SPEEDWAY BLVD. M105
LAS VEGAS, NV 89115
PHONE: 702-643-6363 FAX: 702-543-7010



3 bed 2 bath

FLOOR PLAN

1,260 TOTAL SQ. FT LIVING

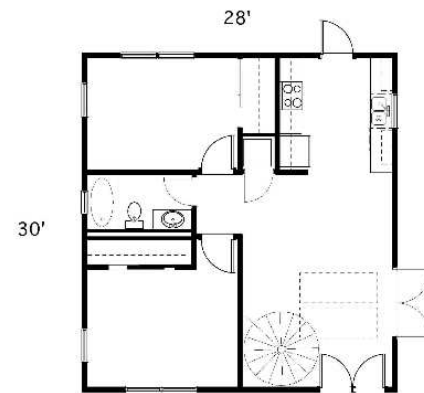


HOUSE 1279-M

SCALE: 1/8" = 1'-0"

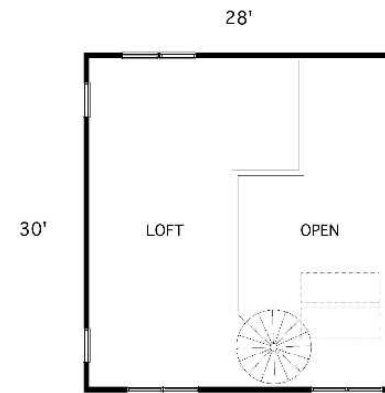


6775 SPEEDWAY BLVD. M105
LAS VEGAS, NV 89115
PHONE: 702-643-6363 FAX: 702-543-7010



1ST. FLOOR PLAN

840 TOTAL SQ. FT LIVING



2ND. FLOOR PLAN

439 TOTAL SQ. FT LIVING

3 bed 2 bath

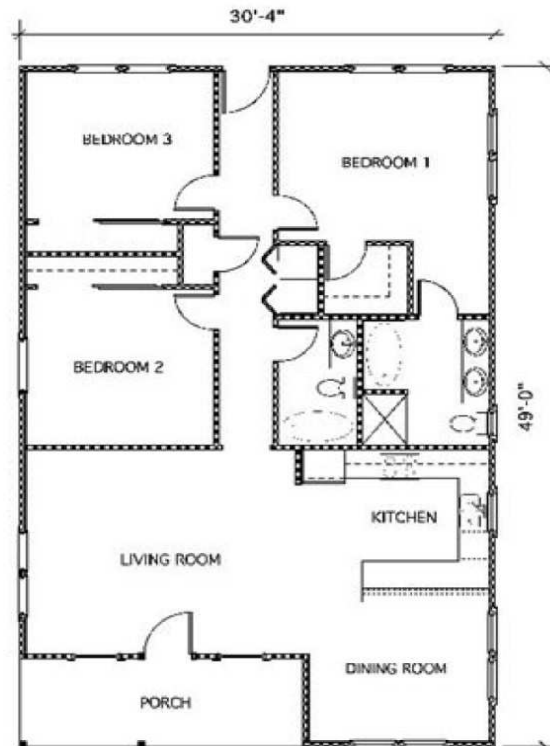


HOUSE 1362

SCALE: 1/8" = 1'-0"



6775 SPEEDWAY BLVD. M105
LAS VEGAS, NV 89115
PHONE: 702-643-6363 FAX: 702-543-7010



3 bed 2 bath



HOUSE 1404



6775 SPEEDWAY BLVD. M105
LAS VEGAS, NV 89115
PHONE: 702-643-6363 FAX: 702-543-7010



3 bed 2 bath

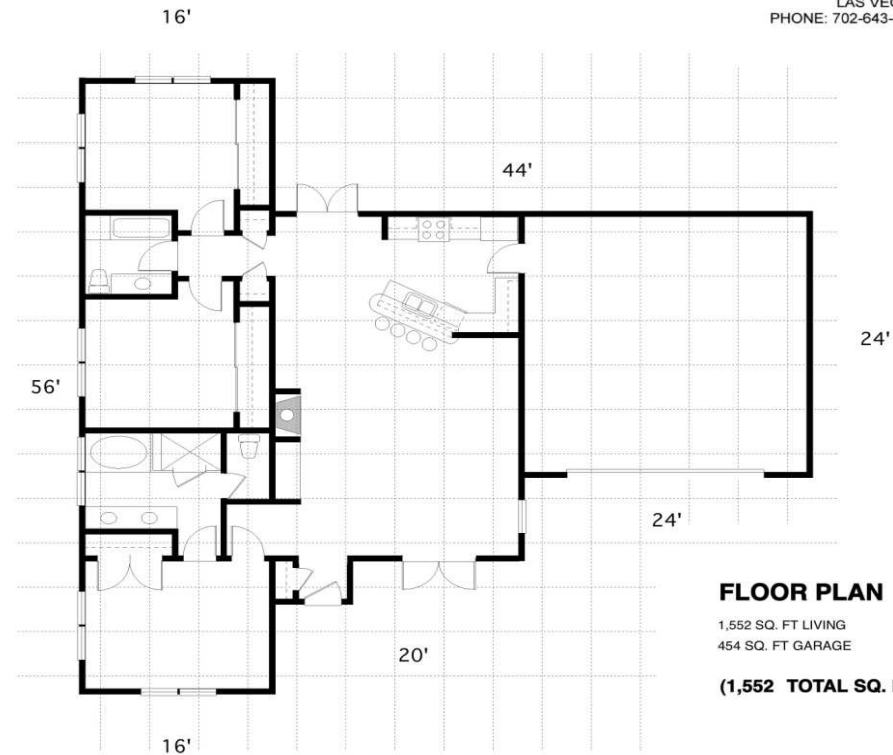


HOUSE 1552 (SW)

SCALE: 1/8" = 1'-0"



6775 SPEEDWAY BLVD. M105
LAS VEGAS, NV 89115
PHONE: 702-643-6363 FAX: 702-543-7010



3 bed 2 bath
2 car garage
2006 sf total

FLOOR PLAN

1,552 SQ. FT LIVING
454 SQ. FT GARAGE

(1,552 TOTAL SQ. FT LIVING)

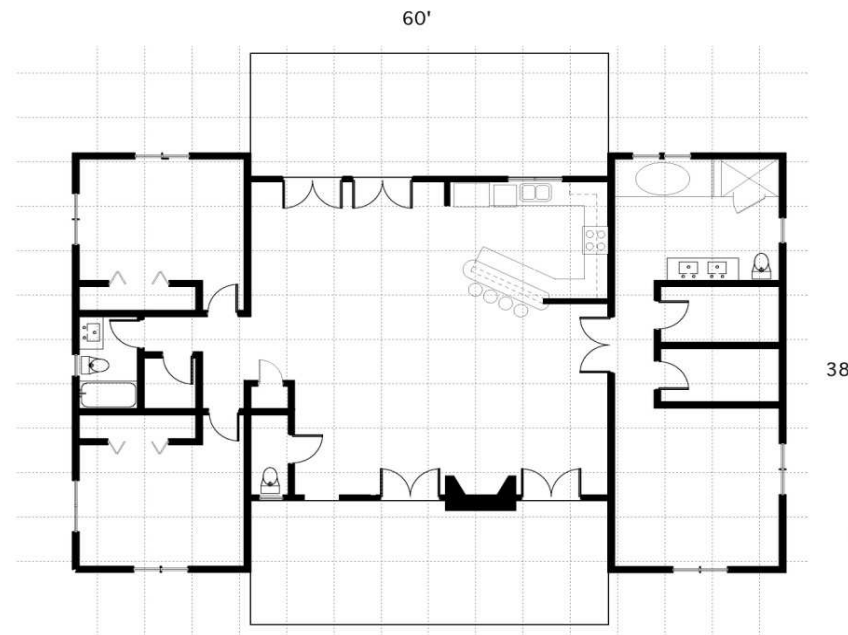


HOUSE 2016 (SW)

SCALE: 1/8" = 1'-0"



6775 SPEEDWAY BLVD. M105
LAS VEGAS, NV 89115
PHONE: 702-643-6363 FAX: 702-543-7010



3 bed 2 bath

FLOOR PLAN
2,016 TOTAL SQ. FT LIVING



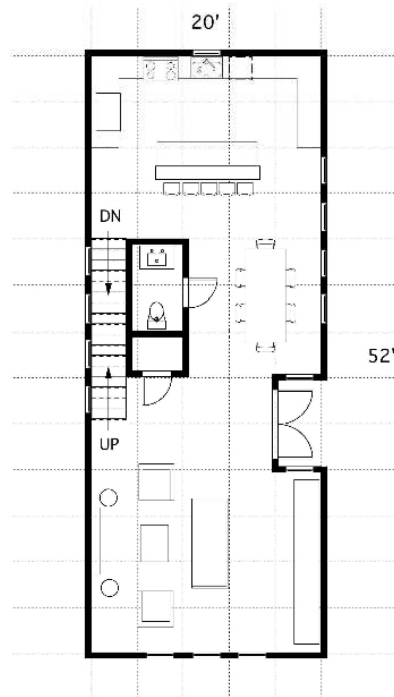
HOUSE 2048(SR)

SCALE: 1/8" = 1'-0"



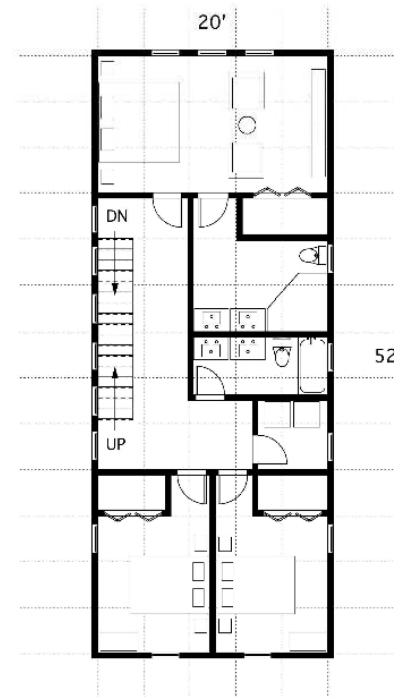
6775 SPEEDWAY BLVD. M105
LAS VEGAS, NV 89115
PHONE: 702-643-6363 FAX: 702-543-7010

3 bed 2.5 bath



FIRST FLOOR

1,008 SQ. FT LIVING



SECOND FLOOR

1,040 SQ. FT LIVING

(2,048 TOTAL SQ. FT LIVING)

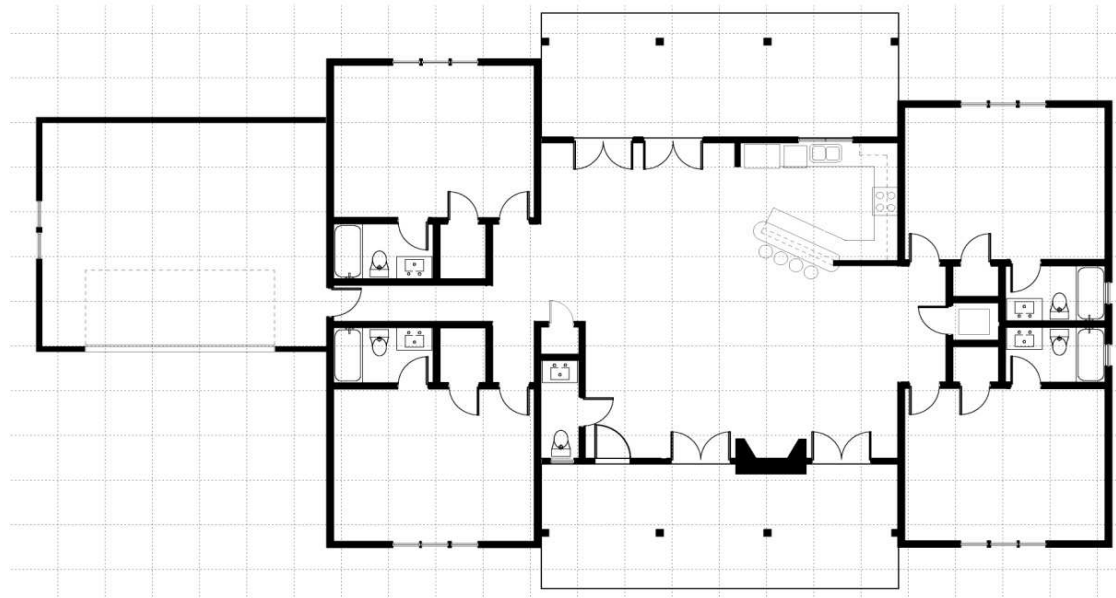
HOUSE 2397

SCALE: 1/8" = 1'-0"



6775 SPEEDWAY BLVD. M105
LAS VEGAS, NV 89115
PHONE: 702-643-6363 FAX: 702-543-7010

4 bed 4 bath
2 car garage



FLOOR PLAN

2,397 TOTAL SQ. FT LIVING
480 TOTAL SQ. FT LIVING





How to Build a GigaHouse In 17 Steps

Step 1:

Lay out the bottom tracks according to plans incorporating the water resistant gaskets between the bottom track and the slab.



Step 2:

Attach bottom track to the slab with Ramset pins or bolts.



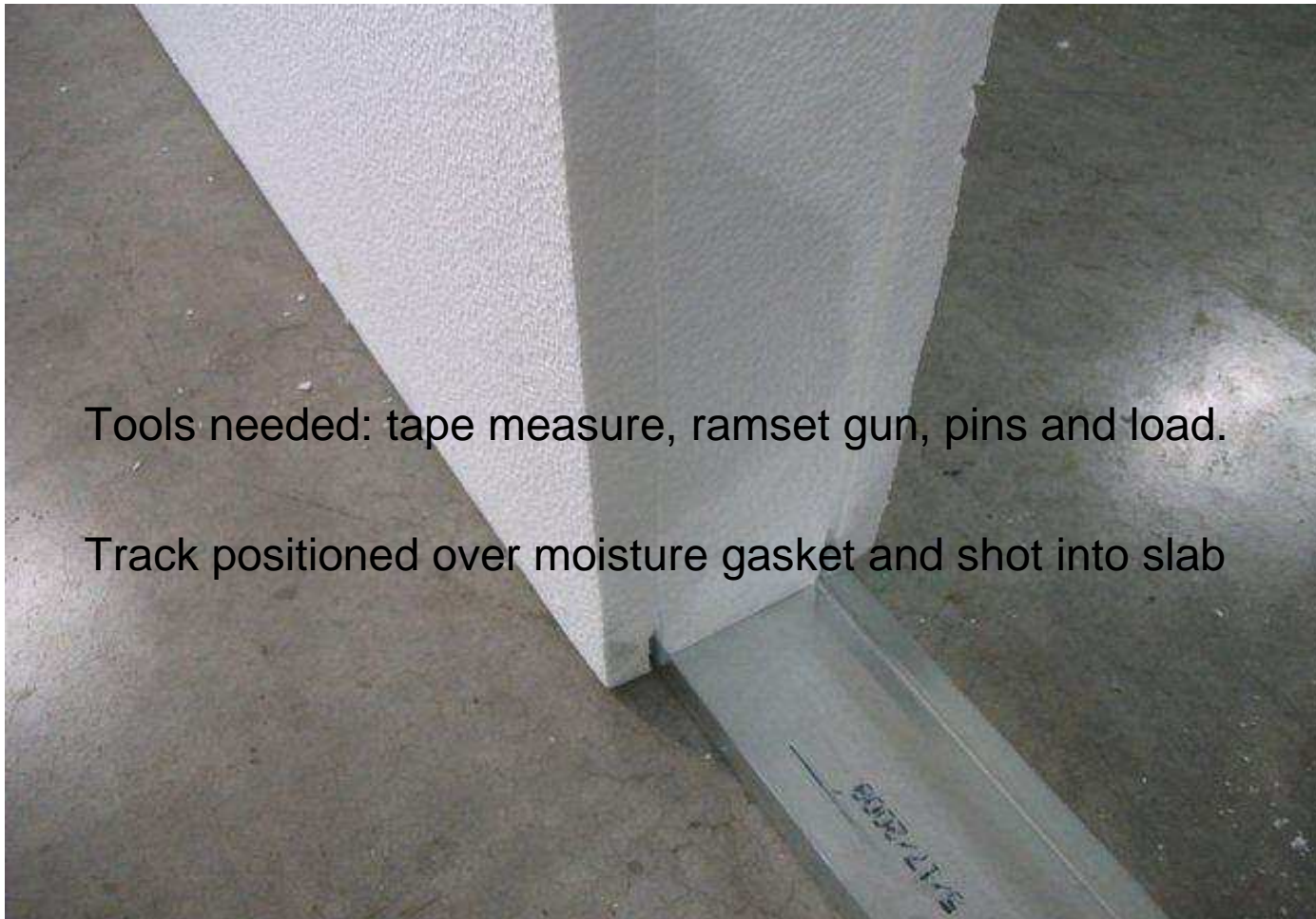
Step 3:

Locate panels next to where they are needed.



Step 4:

Insert pre-cut foam panel into steel stud bottom track.



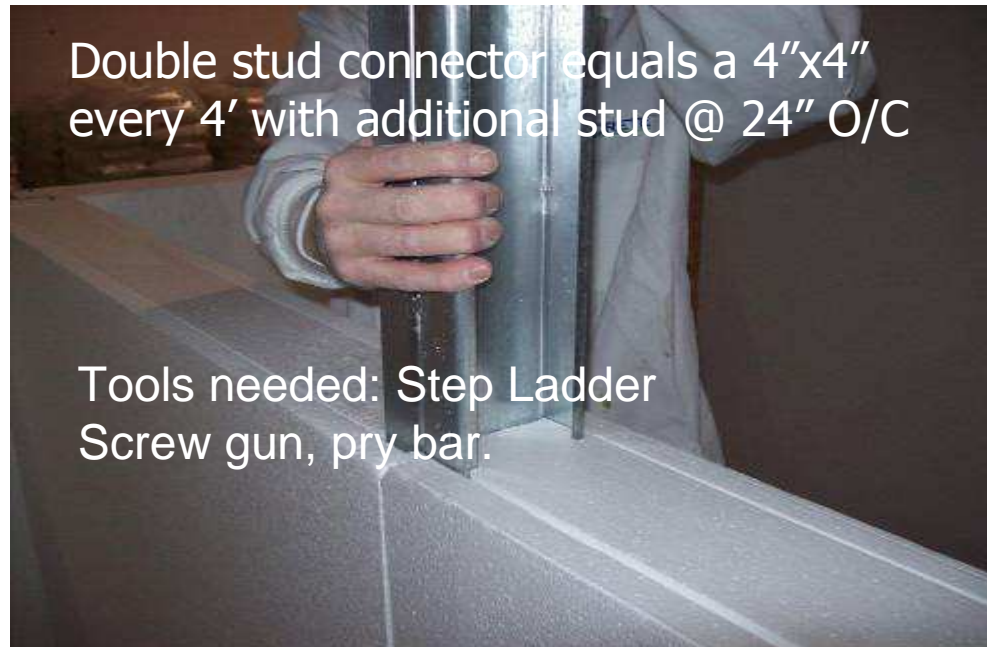
Tools needed: tape measure, ramset gun, pins and load.

Track positioned over moisture gasket and shot into slab

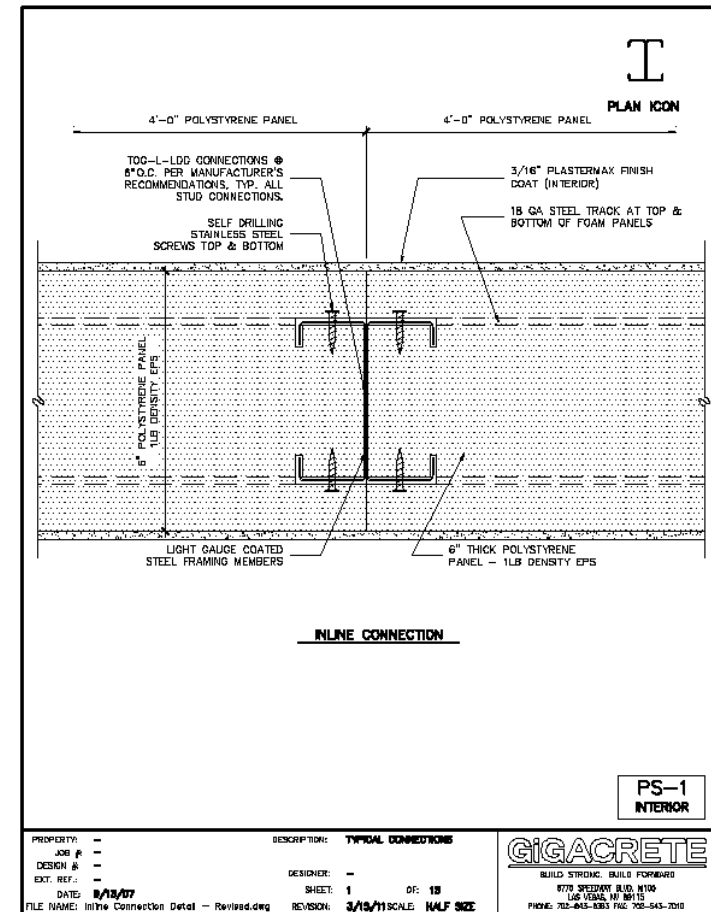


Step 5:

Insert studs.



Patented connectors based on "steel framing" construction methods
Slide down engineered grooves in panels forming panel to panel connections and the structural members both at the same time.



Note: the GigaPanel designs determine where the structural studs and connectors are placed

Section through a typical interior panel shows double studs connecting panel to panel and 24" on center steel studs for all walls.

Exterior walls and roofs may have studs offset within thicker foam wall insulation panels to minimize thermal bridging.



Step 6:

Laser level and brace walls before adding roof trusses.



Step 7:

Roof trusses added to top plate a few hours after building walls





Compression ring holds 200 mph roof trusses securely together on hip or pyramid roof design.



Step 8:

Install doors and windows and screw into steel studs.



Step 9:

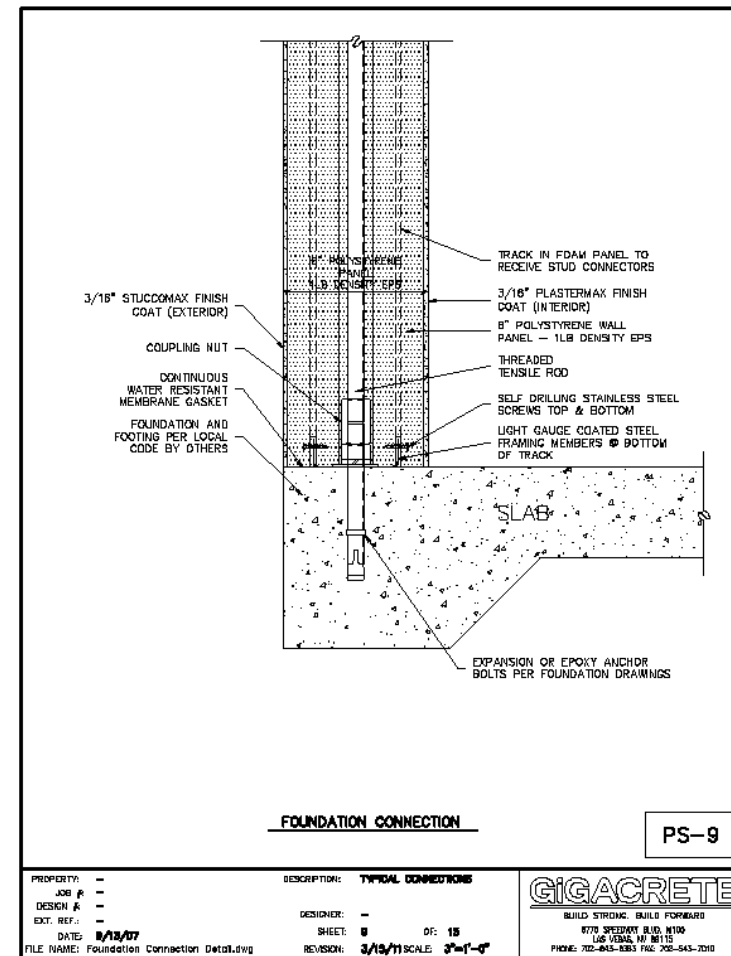
Roof panels are laid onto trusses and studs slid into location holes cut into foam panels.



Step 10:

Roof studs are connected to trusses with steel brackets.

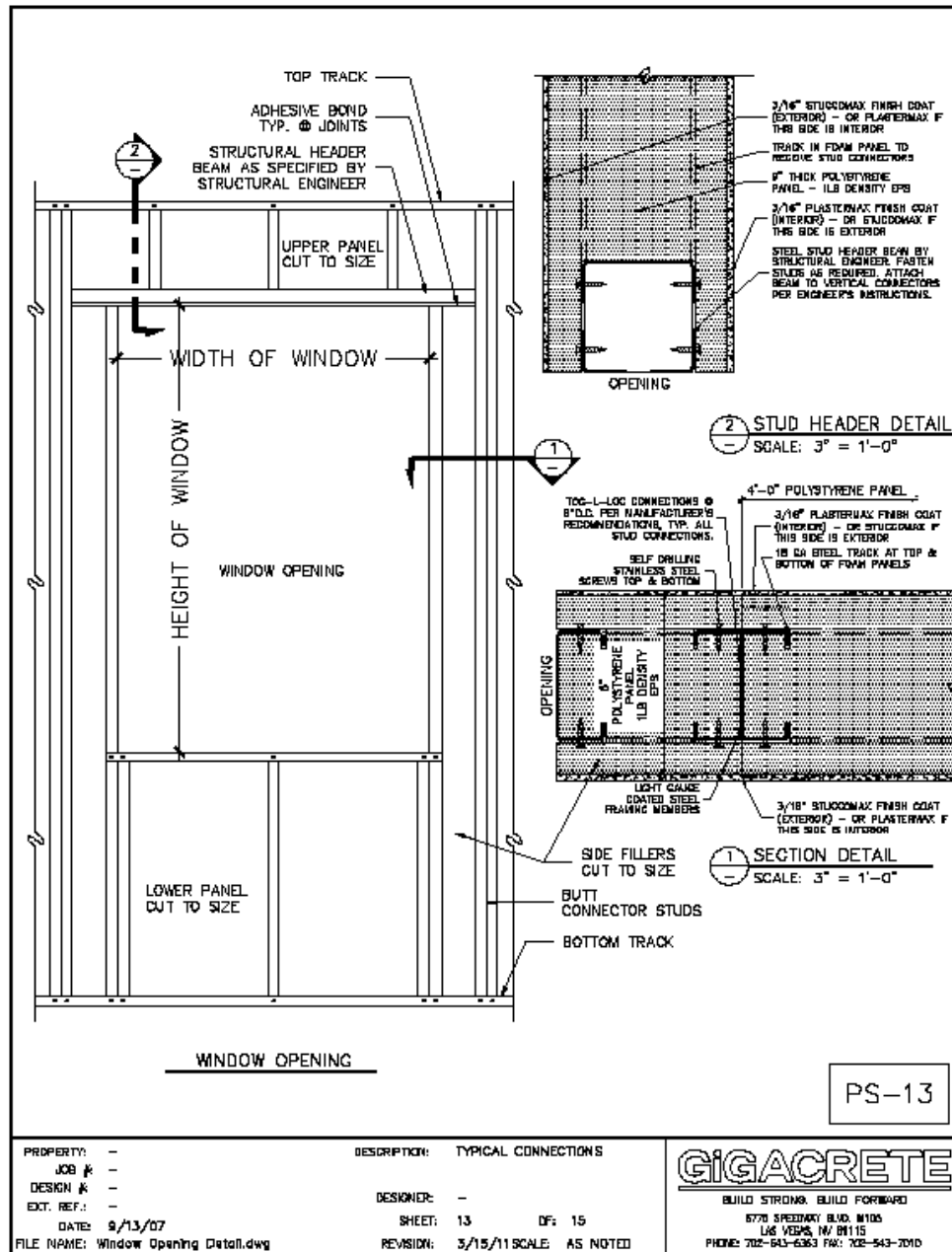




Foundation to wall connection

Hurricane anchors... solid steel connection from the roof to the foundation

Window and Door framing



Step 11.

Install electrical conduits and wires for outlets and switches.



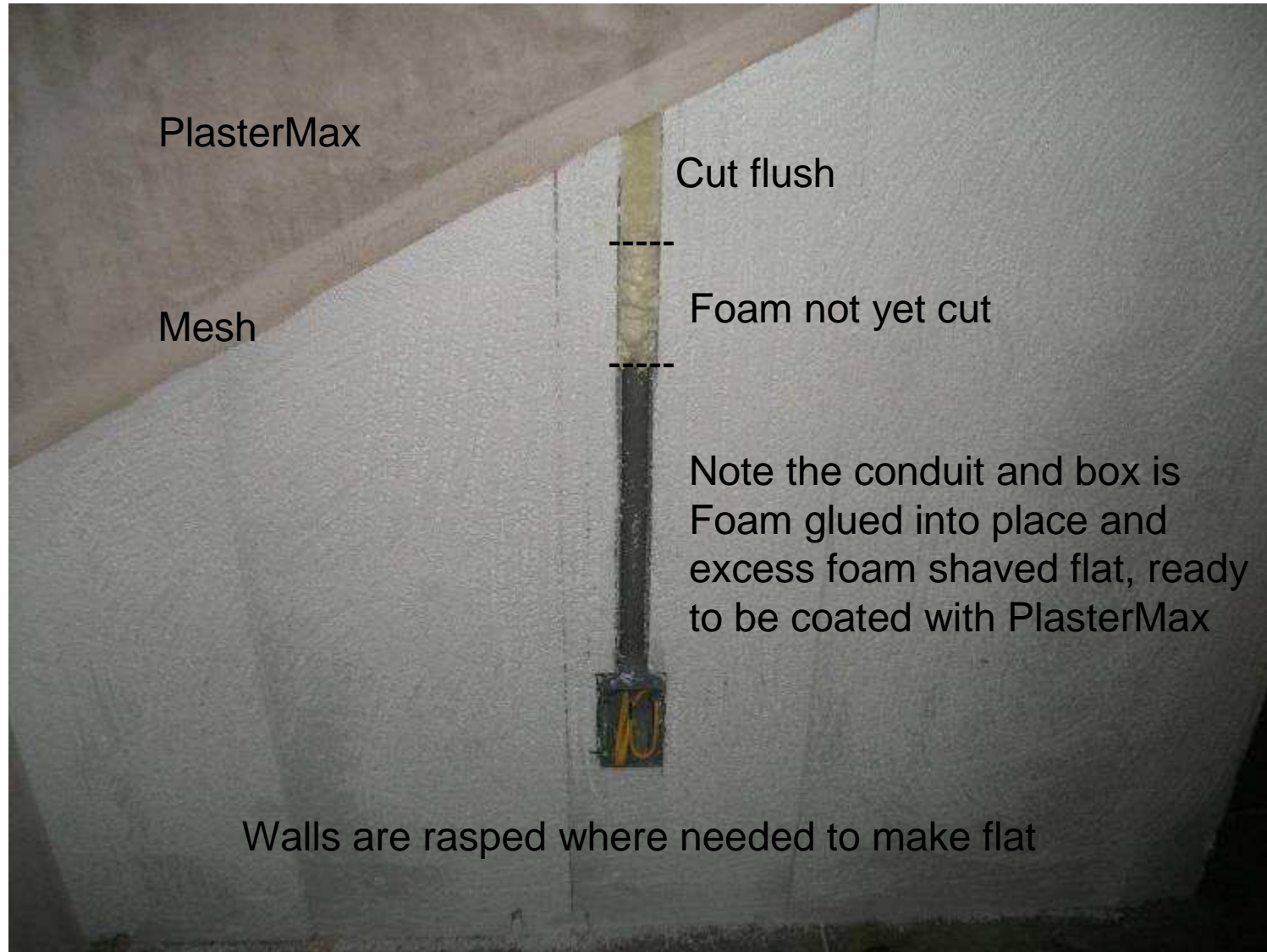
Conduits are pre cut into panels ready to pull wiring.

Conduit or plumbing
passing through walls
Must meet local electrical
codes



Electrical wiring inside chase

Retrofit electrical after house is completed



Step12:

StuccoMax is direct applied over the foam insulation panels.





Window and Door trims cut from EPS foam are covered with StuccoMax



Step 13:

**Colored GigaRoof spray applied directly over the EPS foam
(non USA projects)**



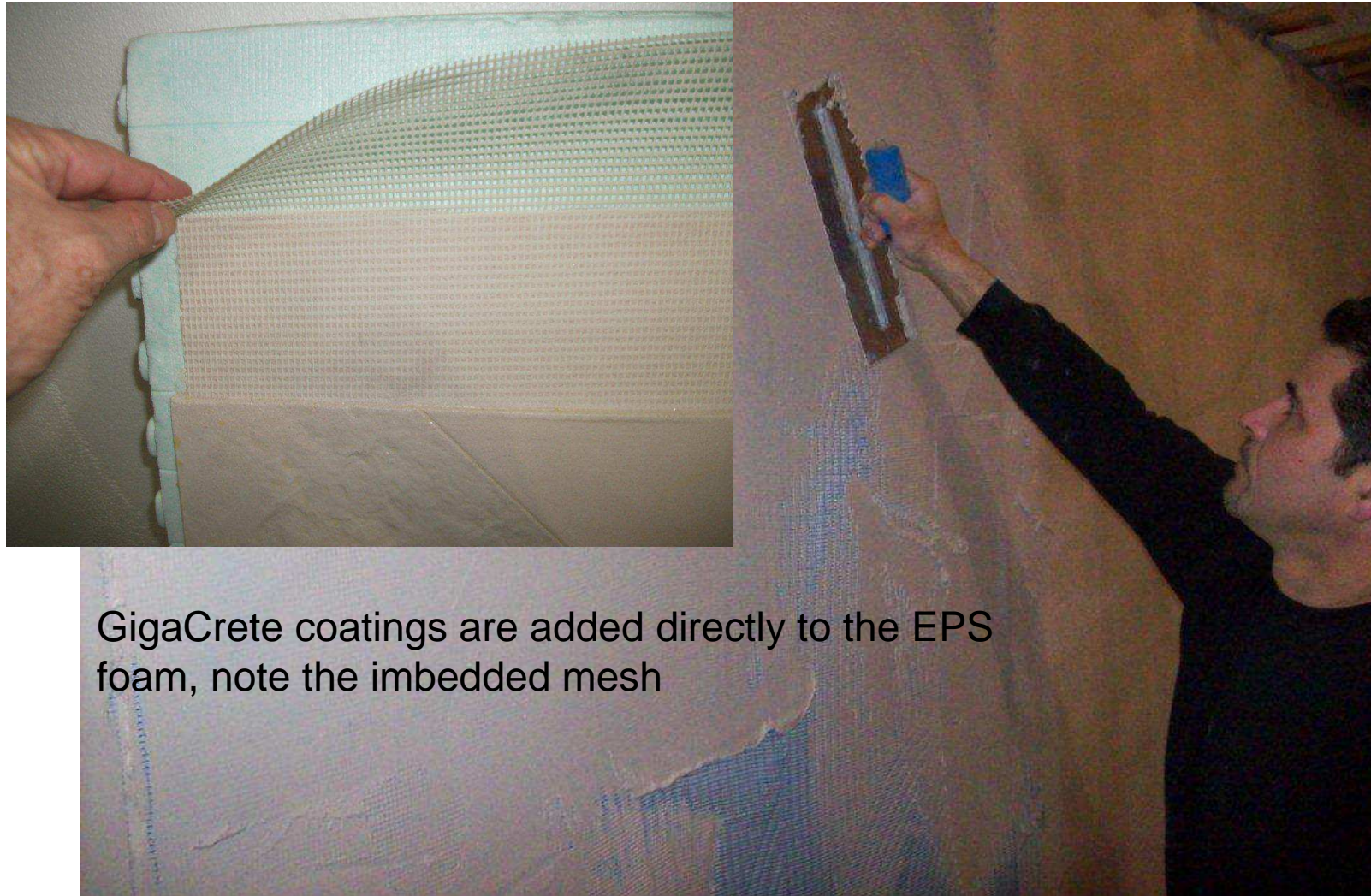
Step 14.

Add insulation sheets on underside of roof and over trusses



Step 15.

PlasterMax over all interior EPS



GigaCrete coatings are added directly to the EPS foam, note the imbedded mesh



PlasterMax applied directly over EPS foam panels.
All panel seam lines are covered over to create a
seamless and durable ceramic finish.

Ceiling underside of roof panels and beams covering structural roof trusses





Optional Magnesium board ceilings (no gypsum board)
With PlasterMax roller texture knockdown finish



Step16:

Window trims are added, screwed into steel studs, patched and ready for paint.



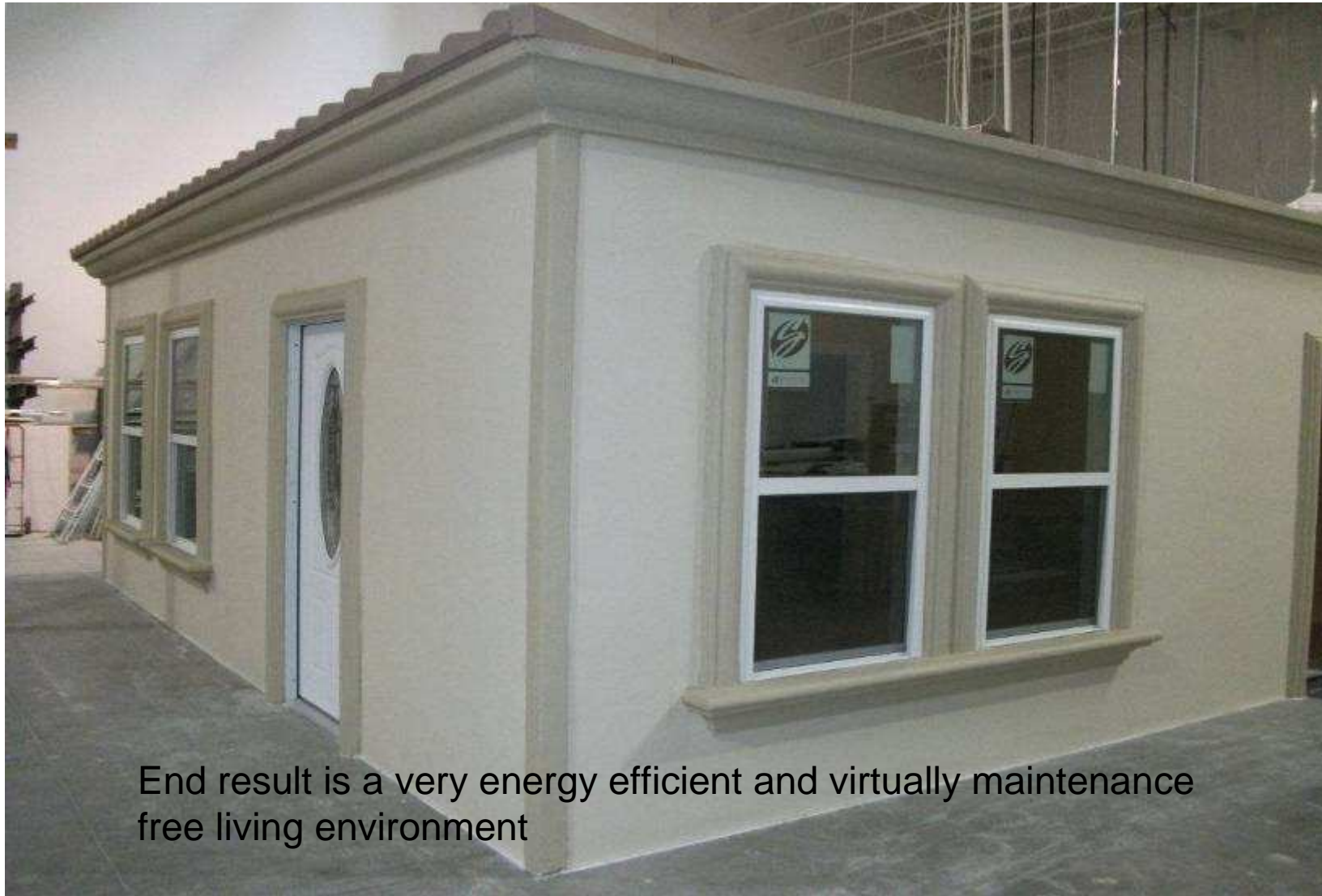
Step17:

StuccoMax is washed to remove dust particles, primed and painted.





Energy efficient vinyl windows (no wood) come in all standard sizes



End result is a very energy efficient and virtually maintenance free living environment



Remodeling Program

GigaCrete coatings can be used as high strength finishes over existing walls offering the following:

- Waterproofing
- Impact resistance
- Termite and other insect resistance
- Mold and Mildew resistance
- Added fire resistance
- Update the look of the home
- Durability
- Interior and exterior finishes



GigaCrete “Building Wrap”

Wrapping buildings with highly efficient insulating foam materials is not new to the USA but wrapping home with a super tough and durable exterior coating is.

This is where GigaCrete’s ***StuccoMax*** plays an important role.

- **Higher Insulation Values**
- **Lower Heating and Cooling bills**
- **Impact Resistant**
- **Fire resistant**
- **Insect resistant**
- **Upgraded Home Appearance**
- **Durability**



GigaCrete Features and Benefits

- **State of the art “made in the USA” Green building technologies**
- **Higher insulation values means lower operating costs**
- **Everyone deserves a healthier and better home**
- **Higher performance homes without higher cost**
- **Houses built utilizing local unskilled labor**
- **Job creation and training by GigaCrete**
- **Higher abuse resistance**
- **No mold or mildew**
- **Earth friendly and truly sustainable**